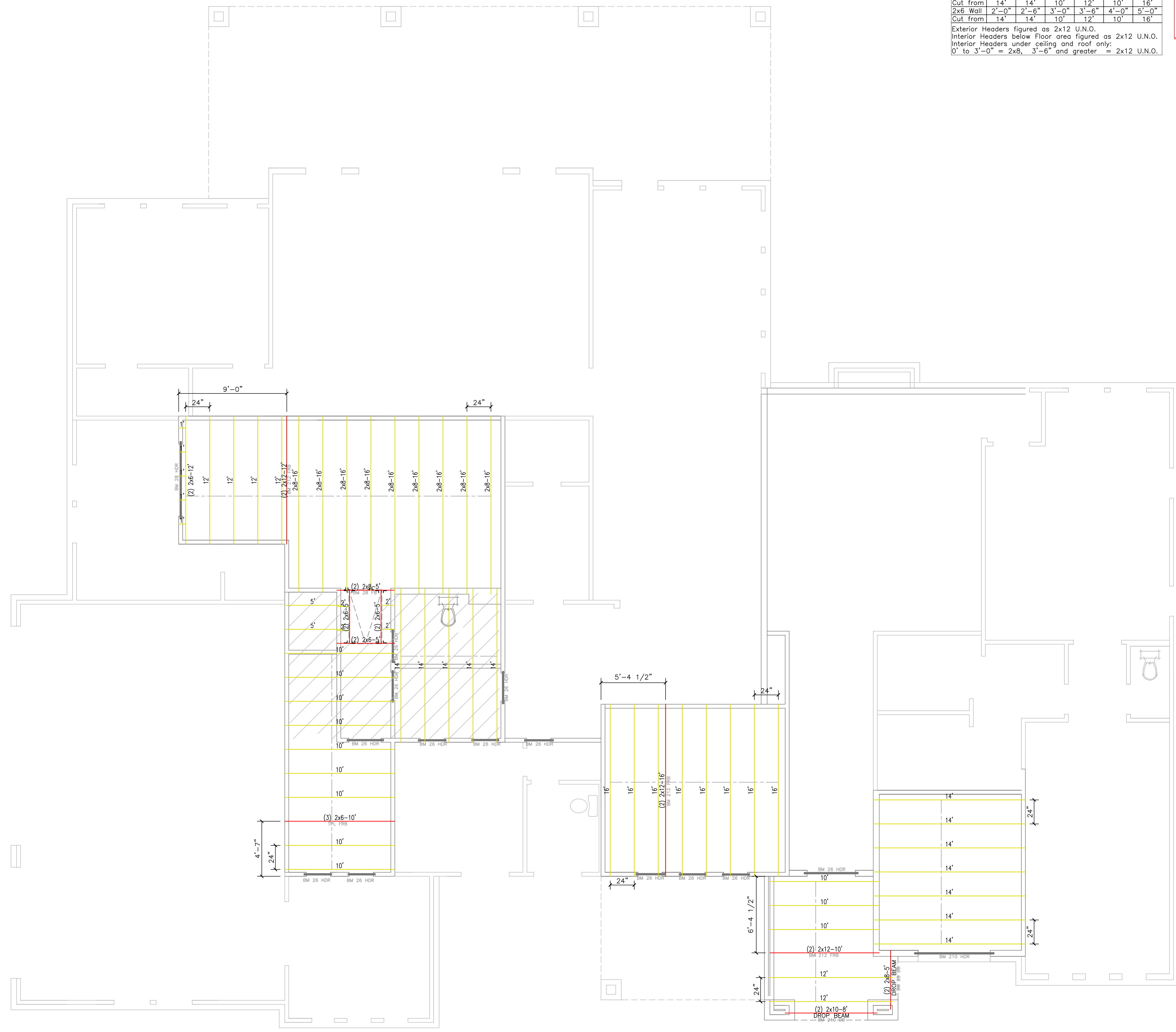


Please take note of the fact that this drawing is an opinion of the estimator. Before proceeding with construction all items should always be confirmed by the builder.

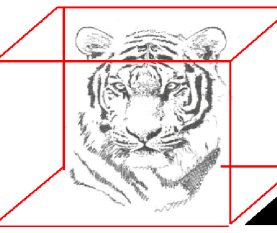


2nd Ceiling Framing (N.T.S.)

Header Utilization:

|          |       |       |       |       |       |       |
|----------|-------|-------|-------|-------|-------|-------|
| 2x4 Wall | 2'-0" | 2'-6" | 3'-0" | 3'-6" | 4'-0" | 5'-0" |
| Cut from | 14'   | 14'   | 10'   | 12'   | 10'   | 16'   |
| 2x6 Wall | 2'-0" | 2'-6" | 3'-0" | 3'-6" | 4'-0" | 5'-0" |
| Cut from | 14'   | 14'   | 10'   | 12'   | 10'   | 16'   |

Exterior Headers figured as 2x12 U.N.O.  
 Interior Headers below Floor area figured as 2x12 U.N.O.  
 0' to 3'-0" = 2x8, 3'-6" and greater = 2x12 U.N.O.



Trophy Estimates Inc.  
281-893-3444

| Frame: 2               | Description                              | Qty      | Unit     |
|------------------------|--|----------|----------|
| 2nd Floor Sub-Floor    |  |          |          |
| Sub-Floor              | 4 X 8 X 3/4" T&G Top Notch 350 (Premier) | 22       | Each     |
| Glue                   | Sub Floor Adhesive                       | 30       | Each     |
| 2nd Walls              |  |          |          |
| Studs                  | 2 X 4-92 5/8 Stud (P)                    | Helm Fir | 63 Each  |
| Studs                  | 2 X 4-104 5/8 Stud (P)                   | Helm Fir | 159 Each |
| Studs                  | 2 X 4-128 5/8 Stud (11)                  | Helm Fir | 77 Each  |
| Studs                  | 2 X 6-104 5/8 Stud (P)                   | Helm Fir | 32 Each  |
| Plate, Pony Walls, Bra | 2 X 4-8L ≥ 12'-10" #3 SFF                |          | 296 LFT  |
| Plate                  | 2 X 6-8L ≥ 12'-10" #2 SYP S4S            |          | 38 LFT   |
| Headers                | 2 X 6 X 10' #2 SYP S4S                   | 1        | Each     |
| Headers                | 2 X 6 X 12' #2 SYP S4S                   | 2        | Each     |
| Headers                | 2 X 6 X 14' #2 SYP S4S                   | 1        | Each     |
| Headers                | 2 X 8 X 14' #2 SYP S4S                   | 1        | Each     |
| Header Filler          | 4 X 8 X 7/16" CDE                        | 1        | Each     |
| 2nd Ceiling            |  |          |          |
| Ceiling Joists         | 2 X 6 X 8' #2 SYP S4S                    | 1        | Each     |
| Ceiling Joists         | 2 X 6 X 10' #2 SYP S4S                   | 19       | Each     |
| Ceiling Joists         | 2 X 6 X 12' #2 SYP S4S                   | 9        | Each     |
| Ceiling Joists         | 2 X 6 X 14' #2 SYP S4S                   | 12       | Each     |
| Ceiling Joists/Straps  | 2 X 6 X 10' #2 SYP S4S                   | 14       | Each     |
| Ceiling Joists         | 2 X 8 X 10' #2 SYP S4S                   | 2        | Each     |
| Ceiling Joists         | 2 X 8 X 10' #2 SYP S4S                   | 8        | Each     |
| Ceiling Joists         | 2 X 10 X 8' #2 SYP S4S                   | 2        | Each     |
| Furring / Gables       | 2 X 4-8L ≥ 12'-10" #3 SFF                |          | 424 LFT  |
| Ceiling Beams          | 2 X 12 X 10' #2 SYP S4S                  | 2        | Each     |
| Ceiling Beams          | 2 X 12 X 12' #2 SYP S4S                  | 2        | Each     |
| Ceiling Beams          | 2 X 12 X 16' #2 SYP S4S                  | 2        | Each     |
| Metal Connector        | (1) 2x6 Joist Hanger LUS2P               | 3        | Each     |
| Metal Connector        | (2) 2x6 Joist Hanger HJ126-2             | 4        | Each     |

Display Theme

- Engineered Header
- Rafter
- Beam
- Floor Joist
- Roof Bracing Beam
- Ceiling Joist

Refrers: 2x6 #2 SYP 24" O.C. UNO  
 Builder: CUSTOM HOME BUILDER  
 Ceiling Joists: 2x6 #2 SYP 24" O.C. UNO  
 Address: 1234 TIGER DRIVE  
 Floor Joists: 16" BCI 4500 24" O.C. UNO  
 City: HOUSTON, TX