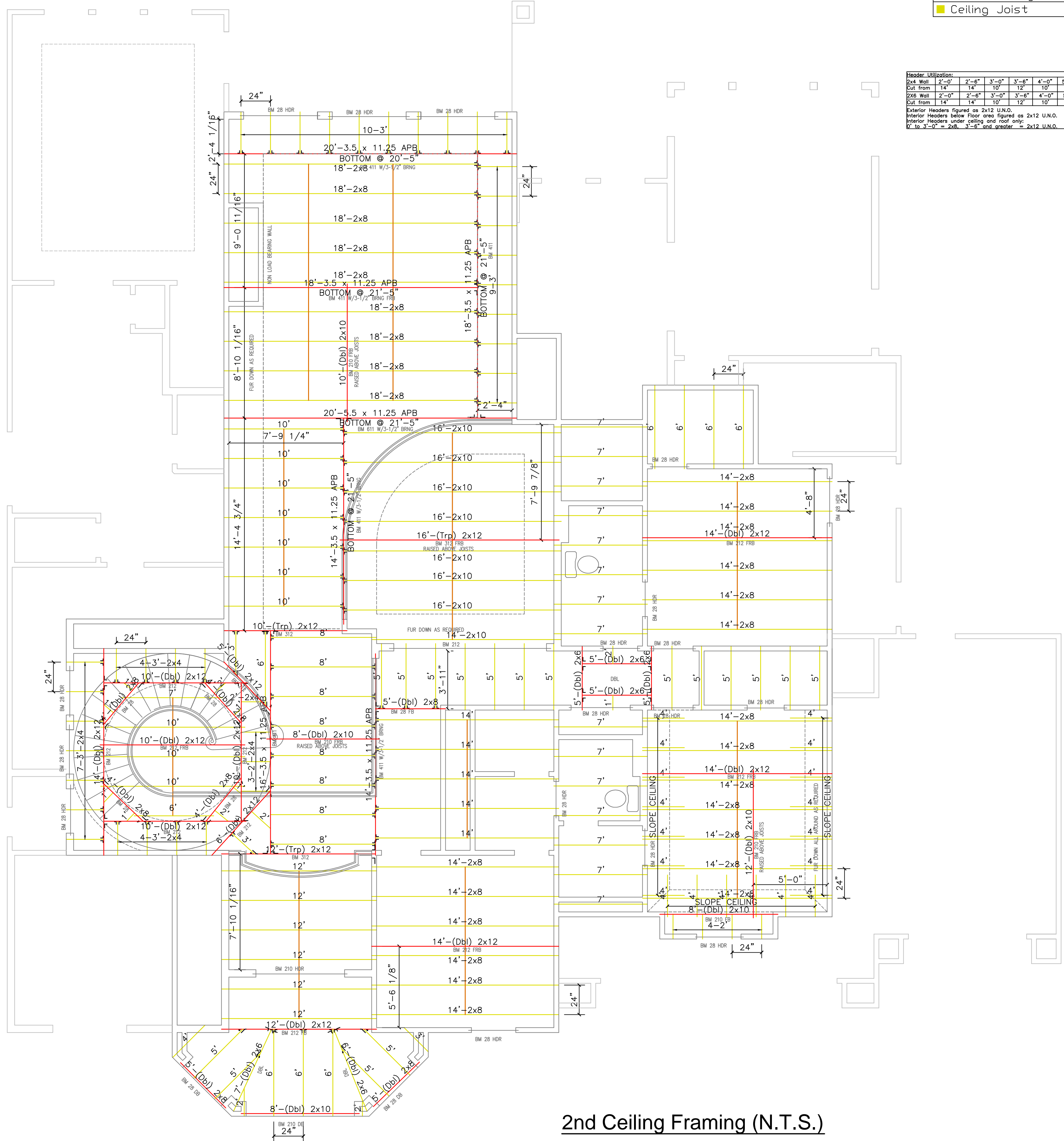


Please take note of the fact that this drawing is an opinion of the estimator. Before proceeding with construction all items should always be confirmed by the builder.



Display Theme

- Engineered Header
- Beam
- Floor Joist
- Roof Bracing Beam
- Ceiling Joist

Header Utilization:

2x4 Wall	2'-0"	2'-6"	3'-0"	3'-6"	4'-0"	6'-0"
Ext from	14'	14'	10'	12'	10'	18'
2x6 Wall	2'-0"	2'-6"	3'-0"	3'-6"	4'-0"	5'-0"
Ext from	14'	14'	10'	12'	10'	18'

Exterior Headers figured as 2x12 U.N.O.
Interior Headers below floor area figured as 2x12 U.N.O.
Interior Headers under ceiling and roof only.
V to 3'-0" = 2x8, 3'-6" and greater = 2x12 U.N.O.

Frame: 2

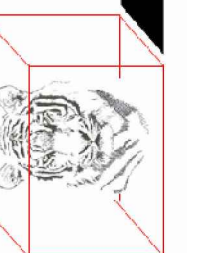
2nd Floor Sub-Floor	Description	Qty	Unit
Sub-Floor	4 X 8 X 1-1/8" LP Top Match 350 (sub-floor)	45	Pieces
Glue	Sub floor Adhesive	20	Pieces

2nd Walls	Description	Qty	Unit
Studs	2 X 4-62 5/8 Stud (8')	60	Pieces
Studs	2 X 4-104 5/8 Stud (7')	383	Pieces
Studs	2 X 4-208 5/8 Stud (11')	37	Pieces
Studs	2 X 4-140 5/8 Stud (12')	60	Pieces
Long Length Studs	2 X 4 X 14 #2 SYP S4S	50	Pieces
Studs	2 X 6-62 5/8 Stud (8')	22	Pieces
Studs	2 X 6-104 5/8 Stud (7')	54	Pieces
Long Length Studs	2 X 6 X 14 #2 SYP S4S	19	Pieces
Plate, Pony Walls	2 X 4 PL #3 SYP	264	Linear Fe
Plate	2 X 6 PL #3 SYP S4S	308	Linear Fe
Curved Plate	4 X 8 X 23'-0" CDX SYP PLY	9	Pieces
Headers	2 X 8 X 10 #2 SYP S4S	8	Pieces
Headers	2 X 8 X 12 #2 SYP S4S	1	Pieces
Headers	2 X 8 X 14 #2 SYP S4S	3	Pieces
Headers	2 X 8 X 16 #2 SYP S4S	2	Pieces
Headers	2 X 10 X 14 #2 SYP S4S	2	Pieces
Headers	2 X 12 X 10 #2 SYP S4S	3	Pieces
Header Filler	4 X 8 X 7/16" OSB	2	Pieces
Hot Wall, Garage E	4 X 8 X 11/16" Green Thermally	61	Pieces

2nd Ceiling	Description	Qty	Unit
Ceiling Joists	2 X 6 X 8 #3 SYP S4S	8	Pieces
Ceiling Joists	2 X 6 X 10 #3 SYP S4S	21	Pieces
Ceiling Joists	2 X 6 X 12 #3 SYP S4S	21	Pieces
Ceiling Joists	2 X 6 X 14 #2 SYP S4S	14	Pieces
Ceiling Joists	2 X 8 X 10 #3 SYP S4S	3	Pieces
Ceiling Joists	2 X 8 X 12 #3 SYP S4S	3	Pieces
Ceiling Joists	2 X 8 X 14 #2 SYP S4S	19	Pieces
Ceiling Joists/Stron	2 X 8 X 16 #2 SYP S4S	8	Pieces
Ceiling Joists	2 X 8 X 18 #2 SYP S4S	9	Pieces
Ceiling Joists	2 X 10 X 8 #3 SYP S4S	6	Pieces
Ceiling Joists	2 X 10 X 10 #3 SYP S4S	2	Pieces
Ceiling Joists	2 X 10 X 12 #3 SYP S4S	2	Pieces
Ceiling Joists	2 X 10 X 14 #2 SYP S4S	1	Pieces
Ceiling Joists	2 X 10 X 16 #2 SYP S4S	7	Pieces
Gram Vault / Archer	4 X 8 X 7/16" OSB	2	Pieces
Furring / Gables	2 X 4 PL #3 SYP	64	Linear Fe
Ceiling Beams	2 X 12 X 10 #2 SYP S4S	12	Pieces
Ceiling Beams	2 X 12 X 12 #2 SYP S4S	6	Pieces
Ceiling Beams	2 X 12 X 14 #2 SYP S4S	9	Pieces
Ceiling Beams	2 X 12 X 16 #2 SYP S4S	3	Pieces
Engineered Beams	3.5 x 11.25 APB	2	14'-0"
Engineered Beams	3.5 x 11.25 APB	1	16'-0"
Engineered Beams	3.5 x 11.25 APB	2	18'-0"
Engineered Beams	3.5 x 11.25 APB	1	20'-0"
Engineered Beams	5.5 x 11.25 APB	1	20'-0"
Simpson Hangers	(1) 2x12 Joist Hanger LUS210	7	Pieces
Simpson Hangers	(1) 2x4 Joist Hanger LUS24	15	Pieces
Simpson Hangers	(1) 2x6 Joist Hanger LUS26	63	Pieces
Simpson Hangers	(1) 2x6 Left SUL26	2	Pieces
Simpson Hangers	(1) 2x6 Right SUR26	5	Pieces
Simpson Hangers	(2) 2x12 HL210-2	4	Pieces
Simpson Hangers	(2) 2x12 LH SUL210-2	1	Pieces
Simpson Hangers	(2) 2x12 RH SUR210-2	1	Pieces
Simpson Hangers	(2) 2x6 Left SUL26-2	7	Pieces
Simpson Hangers	(2) 2x6 Left SUL26-2	4	Pieces
Simpson Hangers	(2) 2x12 Joist Hanger HL210-3	1	Pieces
Simpson Hangers	3.5 x 11.25 HGUS410	5	Pieces

Builder: Best Builder Custom Homes
 Address: 1734 C.C. LINO
 City: Houston, TX
 Wonderful Estates

Trophy Estimates
 281-893-3444



Made in USA

2nd Ceiling Framing (N.T.S.)